

ATLAS

Leisure Homes & Lodges 2015



Where memories are made

2015
Collection

Welcome to the brand new 2015 holiday home range from Atlas Leisure Homes.

Atlas has led the way in holiday home design for over 30 years and this latest range further enhances our reputation for offering only the highest quality leisure homes backed up by service which is second to none.

With investment in the latest manufacturing techniques; use of only the highest specification fixtures and fittings; and quality checks at every stage of the production process, total customer satisfaction is guaranteed.

With striking exteriors and stylish interiors, each model has comfortable, high quality furnishings, contemporary fabrics, stylish fittings and an array of practical features.

With a choice unmatched in the market, the 2015 range from Atlas has something for everyone. Whatever your taste and budget, you will feel truly at home in your Atlas holiday home.

For more information call us on **01482 562101**
or visit **atlasleisurehomes.co.uk**



ULTRAWARM

Ultrawarm is a combination of high performance insulating materials and construction methods developed by Atlas in partnership with our insulation suppliers. Ultrawarm will further enhance the thermal properties of your Atlas leisure home reducing heating costs and keeping it warmer for longer, ensuring comfort in all weather conditions. Available as an option on 2015 models*, the Ultrawarm insulation package consists of:

- 150mm 'Smart Cavity' roof system including mineral wool and reflective insulating foil (200mm 'Smart Cavity' roof on

Concept Lodge, Jasmine Lodge and Lilac Lodge).

- 50mm 'Smart Cavity' exterior wall system including high performance reflective foil faced rigid PIR foam (65mm 'Smart Cavity' exterior wall on Concept Lodge and Jasmine Lodge, 100mm 'Smart Cavity' exterior wall on Lilac Lodge).
- 60mm mineral wool floor insulation in Ultrawarm floors (90mm 'Smart Cavity' floor system including high performance reflective foil faced rigid PIR foam on Jasmine Lodge).

Performance Increase (Typical)	Standard insulation average 'U' value	Extra insulation average 'U' value**	Extra insulation % improvement on standard insulation	Ultrawarm insulation average 'U' value***	Ultrawarm % improvement on standard insulation
Everglade-3	1.21 W/m ² k	0.82 W/m ² k	32.2%	0.59 W/m ² k	51.2%
Ruby-3	1.25W/m ² k	0.83 W/m ² k	33.6%	0.60 W/m ² k	52.0%

* Jasmine Lodge has Ultrawarm 'Smart Cavity' insulation as standard.

** Calculations based on a leisure home with Extra insulation and standard air filled double glazing.

*** Calculations based on a leisure home with Ultrawarm insulation and standard air filled double glazing.

A 'Low E', energy efficient glass upgrade is available which will further enhance thermal performance.

ULTRAWARM PLUS

The Ultrawarm Plus insulation package is designed to improve further still the comfort of your Atlas leisure home. It enhances all of the benefits achieved by Ultrawarm with superior wall and insulation thickness.

Available as an option on 2015 Atlas lodge ranges, the Ultrawarm Plus insulation package consists of:

- 200mm 'Smart Cavity' roof system including mineral wool and reflective insulating foil.

- 65mm 'Smart Cavity' exterior wall system including high performance reflective foil faced rigid PIR foam (100mm on Lilac Lodge).
- 70mm 'Smart Cavity' floor system including high performance reflective foil faced rigid PIR foam (90mm on Jasmine Lodge).
- The Ultrawarm Plus option includes air filled, 'Low E' energy saving glass.

Performance Increase (Typical)	Premium insulation average 'U' value	Ultrawarm insulation average 'U' value'	Ultrawarm % improvement on Premium insulation	Ultrawarm Plus insulation average 'U' value	Ultrawarm Plus % improvement on Premium insulation
Concept Lodge-3	0.69 W/m ² k	0.63 W/m ² k	8.7%	0.51 W/m ² k	26.1%
Jasmine Lodge-6	N/A	0.65 W/m ² k	N/A	0.50 W/m ² k	(23.1%)
Lilac Lodge-5	0.67 W/m ² k	0.60 W/m ² k	10.4%	0.51 W/m ² k	23.9%

f Calculations based on a leisure home with Ultrawarm insulation and standard air filled double glazing.

An Argon filled, 'Low E' energy efficient glass upgrade is available which will further enhance thermal performance, please contact Atlas for further details.

All Atlas lodge ranges can be built to BS3632 Park Home specification, other Holiday Homes may be suitable to build to Ultrawarm Plus or BS3632, please contact Atlas for further details.

U Values and W/m²k

What are 'U' values and what does W/m²k mean?

A 'U' value is a measure of heat loss. It is expressed in W/m²k, and shows the amount of heat lost in watts (W) per square metre (m²) of material (for example wall, roof, floor etc.) when the outside temperature, measured in degrees Kelvin (k), is at least one degree lower.

The lower the 'U' value, the better the insulation, keeping your Atlas holiday home warmer for longer and making it cheaper to run.

Low 'E' Energy Saving Glass

Low 'E' (or low emissivity), Energy Saving Glass is different from normal glass because it has a micro thin transparent metallic coating on one side which is almost invisible. Low 'E', Energy Saving Glass works by reducing the amount of heat lost through glass by reflecting it back into the room rather than allowing it to escape through the glass.

Argon

Standard double glazing uses two panels of glass fixed a distance apart, this distance or airgap has an insulating effect by reducing the amount of heat that can escape from or the amount of cold that can enter your Leisure Home.

Filling the space with Argon gas will make it even more difficult for heat to escape making the double glazed panel significantly more thermally efficient.

Trace Heating

Available as an option on all 2015 models, Trace Heating is a heating cable fitted inside the external pipe insulation and activates when the temperature falls below 5°C*. Trace Heating can operate in conditions down to -20°C* helping to safeguard your holiday home against damage caused by freezing pipes. Trace Heating cannot overheat, is maintenance free and has very low running costs.

Note: Trace Heating requires a continuous power supply, check with your Park Operator to ensure electricity will be available over winter periods and when your Park is closed.

* Manufacturers figures and recommendations.

Contents

MOONSTONE-2	4-5
FLORIDA-3 & FLORIDA-3 EXCEL	6-7
EVERGLADE-3 & EVERGLADE-3 EXCEL	8-9
CHORUS-6	10-11
RUBY-3	12-13
DEBONAIR-2	14-15
HERITAGE-2	16-17
STATUS-2	18-19
IMAGE-2	20-21
CONCEPT LODGE-3	22-23
JASMINE LODGE-6	24-25
LILAC LODGE-5	26-27
FEATURES & OPTIONS	28-29
EXTERNAL DIMENSIONS	30-31

 Like our page on Facebook
facebook.com/atlaslh

 Follow us on Twitter
[@atlaslh](https://twitter.com/atlaslh)

Moonstone-2

affordable elegance

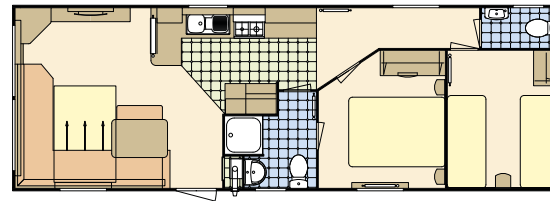


An affordable entry-level leisure home, the Moonstone-2 is available with an array of high quality features usually only found on more luxurious models including central heating and double glazing as standard.

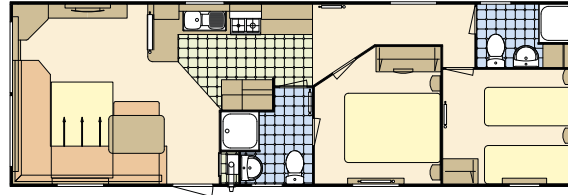
To provide extra living space, the spacious lounge and dining area with large L-shape seating with fold-out bed. A glass flame effect electric fire complements this stylish living area.

With both two and three bedroom options available each with two toilets as standard, the Moonstone-2 has a unique and imaginative family friendly layout.

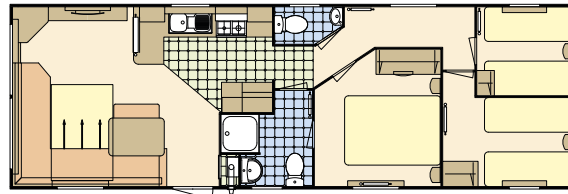
Model illustrated 35 x 12-2 bedroom.



35 x 12 - 2 bedroom 6 berth



36 x 12 - 2 bedroom 6 berth ES



36 x 12 - 3 bedroom 8 berth



High specification as standard

The entire Atlas range includes many domestic style features you may not expect to find in a holiday home as standard.

We also offer an exciting range of options, unique to each model, allowing you to make your holiday home truly individual.

Selected options

- Fridge or fridge freezer
- Coffee table
- 'Gazunder' beds to one twin room
- TRV's to gas central heating
- 'Low E' double glazing
- Metal bunk option sleeps two in a double with a single bunk above
- Extra or Ultrawarm insulation
- Electric plinth heaters and towel rails
- Exterior light
- Environmental colours
- Canaxel cladding
- Rigid PVC cladding
- Timber cladding (requires routine maintenance)
- Trace heating
- Pre-galvanised or fully galvanised chassis

Duvets, pillows, bedrunner, TV, DVD player, and all other ornaments are for display only.

**OPTIONAL HIGH PERFORMANCE
ULTRAWARM
'SMART CAVITY' INSULATION**



Florida-3 Range

a welcoming environment



The Florida-3 and Florida-3 Excel have been tastefully designed to offer a stylish yet relaxed living environment.

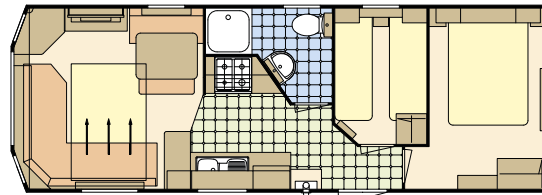
With an open plan living area featuring co-ordinating soft furnishings, this delightful holiday home feels warm and cosy whatever the weather outside.

The dinette style dining area adjoining the stylish kitchen features plenty of seating, creating the ideal place to entertain friends and enjoy family meals.

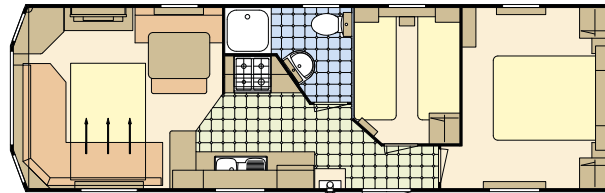
The Florida Range is available in two levels of specification and three different sizes, giving you the flexibility to choose a leisure home that meets your exact requirements.

Model illustrated 35 x 12-3 bedroom with Excel pack.

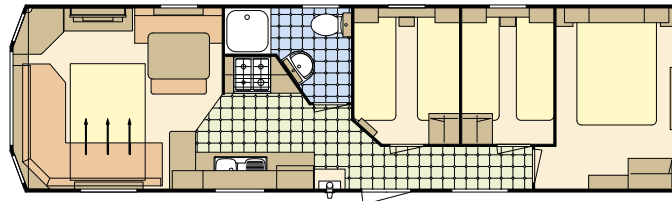




28 x 10 – 2 bedroom 6 berth



32 x 10 – 2 bedroom 6 berth



35 x 10 – 3 bedroom 8 berth



High specification as standard

The entire Atlas range includes many domestic style features you may not expect to find in a holiday home as standard.

We also offer an exciting range of options, unique to each model, allowing you to make your holiday home truly individual.

Selected options

- Pre-galvanised or fully galvanised chassis
- Environmental colours
- Timber cladding (requires routine maintenance)
- Extra or Ultrawarm insulation
- Double glazed PVCu exterior door and windows
- 'Low E' double glazing
- Trace heating
- Gas fire in lieu of electric
- Gas central heating, combi boiler and TRV's
- Electric plinth heaters and towel rails
- Coffee table
- Undercounter fridge or integrated fridge freezer

Excel Pack consisting of:

- Exterior light
- Underlay to lounge carpet
- Deep sprung seating, fabric kicking boards to lounge seating
- Fold out bed action to lounge seating
- Recirculating extractor hood to kitchen
- Doors to lounge open shelf furniture
- Additional cupboard space to kitchen (some previously open shelves)
- Additional shelving over WC's
- Shaver light to shower room
- Gas strut assisted lift up bed to main bedroom
- 'Gazunda' bed to one twin room
- Top lockers to twin bedrooms

*Duvets, pillows and bedrunner, TV, DVD player, and all other ornaments are for display only.
Florida-3 Excel layouts shown.*

**OPTIONAL HIGH PERFORMANCE
ULTRAWARM
'SMART CAVITY' INSULATION**

Everglade-3 Range

spacious living



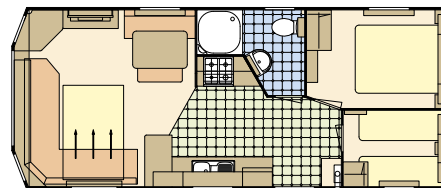
A great value family leisure home, the Everglade-3 features a stylish and spacious interior.

The modern open plan living area features a fully vaulted ceiling, stylish fitted cabinets, a contemporary gas fire and relaxing, co-ordinating soft furnishings.

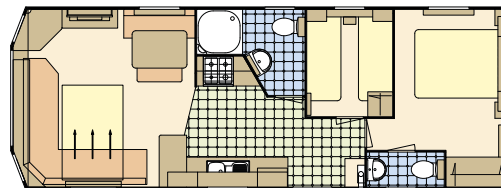
The Everglade-3 is available in two levels of specification and five different sizes, giving you the flexibility to choose a leisure home that meets your exact requirements, with two or three bedroom options.

The Everglade-3 is also available with two specially designed layouts providing access for wheelchair users without compromising style and quality.

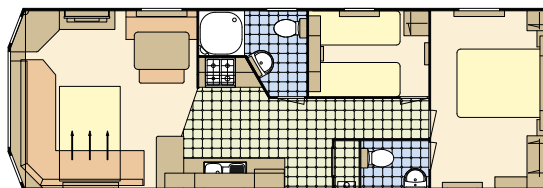
Model illustrated 35 x 12-2 bedroom with Excel pack.



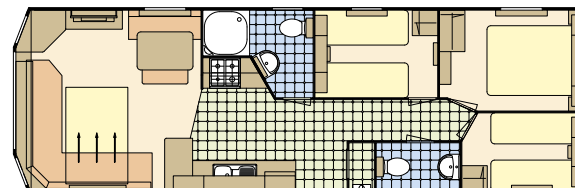
28 x 12 - 2 bedroom 6 berth



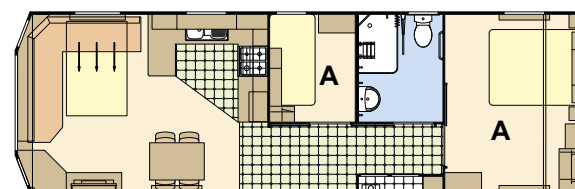
32 x 12 - 2 bedroom 6 berth



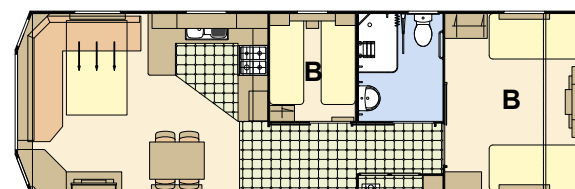
35 x 12 - 2 bedroom 6 berth



36 x 12 - 3 bedroom 8 berth



36 x 12 - 2 bedroom 6 berth - Wheelchair Option A



36 x 12 - 2 bedroom 6 berth - Wheelchair Option B

High specification as standard

The entire Atlas range includes many domestic style features you may not expect to find in a holiday home as standard.

We also offer an exciting range of options, unique to each model, allowing you to make your holiday home truly individual.

Selected options

- Pre-galvanised or fully galvanised chassis
- Environmental colours
- Timber cladding (requires routine maintenance)
- Extra or Ultrawarm insulation
- Double glazed PVCu exterior door and windows
- 'Low E' double glazing
- Trace heating
- Gas fire in lieu of electric
- Gas central heating, combi boiler and TRV's
- Electric plinth heaters and towel rails
- Coffee table
- Undercounter fridge or integrated fridge freezer
- Extractor fan to ensuite/separate toilet
- Hallway divider door (35 x 12/2 & 36 x 12/3 only)

Excel Pack consisting of:

- Exterior light
- Underlay to lounge carpet
- Deep sprung seating, fabric kicking boards to lounge seating
- Fold out bed action to lounge seating
- Recirculating extractor hood to kitchen
- Doors to lounge open shelf furniture
- Additional cupboard space to kitchen (some previously open shelves)
- Additional shelving over WC's
- Shaver light to shower room
- Gas strut assisted lift up bed to main bedroom
- 'Gazunda' bed to one twin room
- Top lockers to twin bedrooms

*Duvets, pillows & bedrunner, TV, DVD player, and all other ornaments are for display only.
Everglade-3 Excel layouts shown.*

**OPTIONAL HIGH PERFORMANCE
ULTRAWARM
'SMART CAVITY' INSULATION**

Chorus-6

your home from home



Featuring central heating and double glazing as standard, the Chorus-6 combines a stylish design with contemporary interior fittings – making it a firm favourite with holiday home owners.

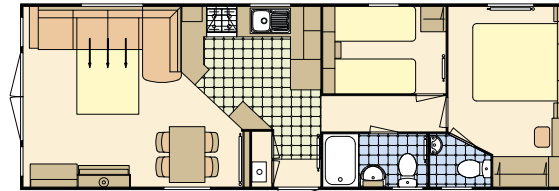
The open plan living area features elegant soft furnishings and plenty of seating, making the Chorus-6 an ideal holiday home whether relaxing with family or entertaining friends.

The large kitchen features expansive work surfaces and integrated appliances making it both attractive and practical.

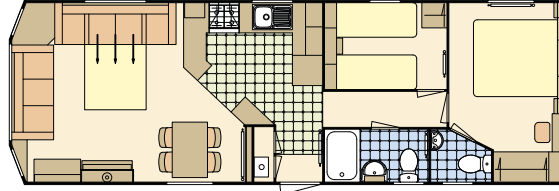
Available in 2 or 3 bedroom layouts, this delightful holiday home features contemporary styling throughout.

Model illustrated 36 x 12-2 bedroom with bay.

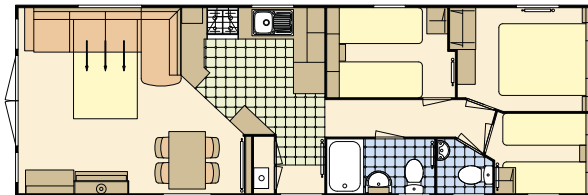




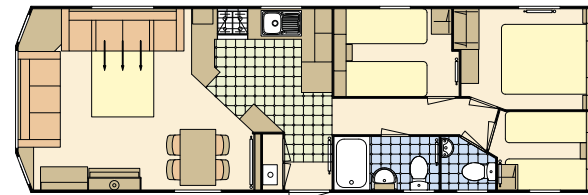
36 x 12 - 2 bedroom 6 berth FD



36 x 12 - 2 bedroom 6 berth



37 x 12 - 3 bedroom 8 berth FD



37 x 12 - 3 bedroom 8 berth

High specification as standard

The entire Atlas range includes many domestic style features you may not expect to find in a holiday home as standard.

We also offer an exciting range of options, unique to each model, allowing you to make your holiday home truly individual.

Selected options

- Pre-galvanised or fully galvanised chassis
- Environmental colours
- Canexel exterior cladding
- Rigid PVC exterior cladding
- Timber cladding (requires routine maintenance)
- Extra or Ultrawarm insulation
- 'Low E' double glazing
- Trace heating
- Electric plinth heaters and towel rails
- Scatter cushions to lounge
- Extra dining chairs
- Gas fire
- Coffee table
- Built in microwave
- 'Gazunda' space saving beds to one twin room
- Wall mounted extractor in ensuite/ separate toilet

Duvets, pillows & bedrunner, TV, and all other ornaments are for display only.

**OPTIONAL HIGH PERFORMANCE
ULTRAWARM
'SMART CAVITY' INSULATION**



Ruby-3

modern charm and
elegance



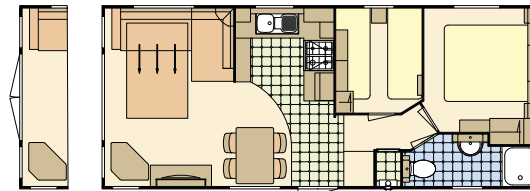
A classic holiday home, the Ruby-3 exudes charm and elegance throughout.

The tastefully furnished living area with sofa-style seating adjoins a modern fitted kitchen with integrated oven and hob – the perfect place to enjoy family meals.

The spacious dining area features a freestanding dining table and luxurious upholstered chairs and is ideal for entertaining guests.

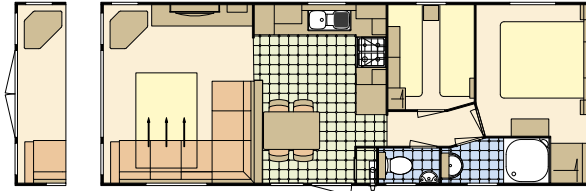
Available with 2 and 3 bedroom layouts, the Ruby-3 is available with optional front French doors in the lounge area.

Model illustrated 35 x 12-2 bedroom.



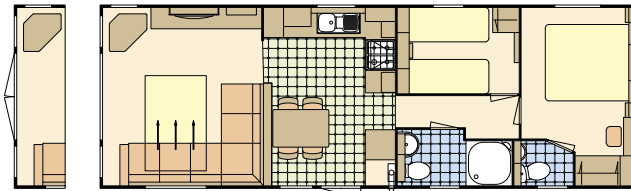
Front Door Option

28 x 12 – 2 bedroom 6 berth



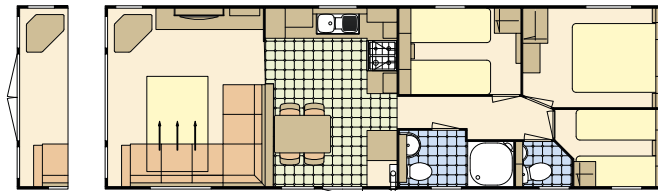
Front Door Option

32 x 12 – 2 bedroom 6 berth



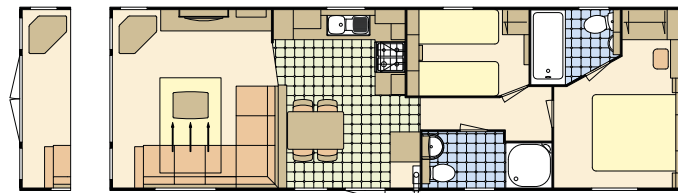
Front Door Option

35 x 12 – 2 bedroom 6 berth



Front Door Option

37 x 12 – 3 bedroom 8 berth



Front Door Option

38 x 12 – 2 bedroom 6 berth

**OPTIONAL HIGH PERFORMANCE
ULTRAUARM
'SMART CAVITY' INSULATION**

High specification as standard

The entire Atlas range includes many domestic style features you may not expect to find in a holiday home as standard.

We also offer an exciting range of options, unique to each model, allowing you to make your holiday home truly individual.

Selected options

- Pre-galvanised or fully galvanised chassis
- Environmental 'green' colours
- Canaxel cladding
- Rigid PVC cladding
- Timber cladding (requires routine maintenance)
- Extra or Ultrawarm insulation
- Double glazed PVCu exterior door and windows
- 'Low E' double glazing
- D/Glazed front French doors inc. 2 x down lighters
- Trace heating
- Gas central heating, combi boiler and TRV's
- Electric plinth heaters and towel rails
- Extra dining chairs
- Gas fire
- Coffee table
- Provision for up to 32" wall mounted TV in lounge
- Integrated microwave
- *Integrated fridge freezer (fitted as standard at extra cost)
- Integrated dishwasher or washer or washer dryer (space for one appliance)
- 'Gazunda' space saving beds (twin rooms only)
- Shower cubicle in lieu of bath (where bath fitted only)
- Shower over bath with screen and wetwalling (where bath fitted only)

**All Ruby models are built with an integrated fridge freezer at extra cost*

Duvets, pillows, bedrunner, TV, DVD player, and all other ornaments are for display only.

Debonair-2

comfort and style



The Debonair-2 is the quintessential farmhouse-style holiday home.

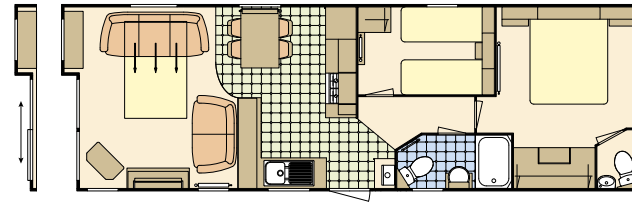
The welcoming lounge which accommodates both a two and three-seater sofa features a woodburner effect electric fire and signature recessed front bay.

The rustic kitchen with traditional cream cabinets benefits from a 4-ring gas hob, integrated oven, microwave* and fridge/freezer. The adjoining dining area has a freestanding dining table with four upholstered chairs.

Available in a choice of 2 or 3 bedroom layouts, the main bedrooms feature en-suite WC and wash basins in addition to a fully featured master bathroom with colour co-ordinated shower.

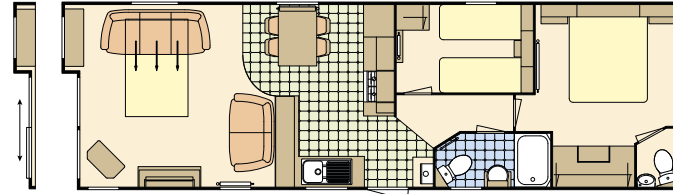
Model illustrated 38 x 12-2 bedroom with optional integrated microwave.





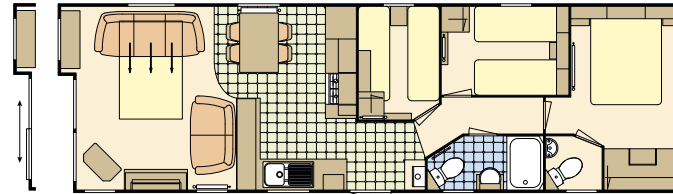
Front Door Option

36 x 12 – 2 bedroom 6 berth



Front Door Option

38 x 12 – 2 bedroom 6 berth



Front Door Option

38 x 12 – 3 bedroom 8 berth



High specification as standard

The entire Atlas range includes many domestic style features you may not expect to find in a holiday home as standard.

We also offer an exciting range of options, unique to each model, allowing you to make your holiday home truly individual.

Selected options

- Pre-galvanised or fully galvanised chassis
- Cladding options
 - Environmental 'green' colours
 - Canaxel cladding
 - Rigid PVC cladding
 - Timber cladding (requires routine maintenance)
- Extra or Ultrawarm insulation
- Double glazed PVCu exterior door and windows
- 'Low E' double glazing
- D/Glazed front sliding patio doors inc. 2 x down lighters
- Trace heating
- Gas central heating, combi boiler and TRV's
- Electric plinth heaters and towel rails
- Extra dining chairs
- Coffee table
- *Integrated microwave (fitted as standard at extra cost)
- Integrated dishwasher
- Integrated washer or washer dryer
- TV point to master bedroom
- TV point to twin bedroom (may require TV signal booster at extra cost)
- TV signal booster
- Towel radiator as part of central heating package
- Extractor in ensuite/separate toilet

Duvets, pillows & bedrunner, TV, DVD player, and all other ornaments are for display only.

**OPTIONAL HIGH PERFORMANCE
ULTRAWARM
'SMART CAVITY' INSULATION**

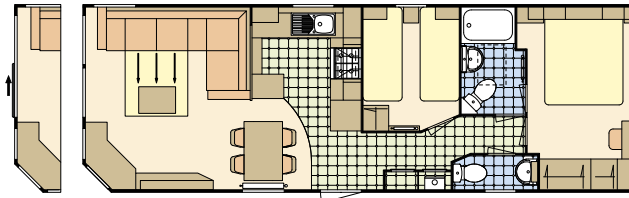
Heritage-2

all new luxury living



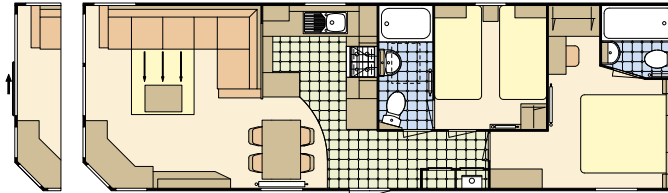
The Heritage-2 is a stunning holiday home with a co-ordinated colour theme throughout. The spacious lounge features luxurious soft furnishings and low level furniture while the glass fronted electric fire complete with remote control has a large landscape mirror above forming an impressive focal feature. This area is finished off with stylish chrome and fabric light fittings to match the fabric of the furnishings. The kitchen area has an integrated oven/hob with grill, large capacity fridge/freezer and optional microwave. Work surfaces, door handles and oven front are all colour co-ordinated to give a true sense of luxury. Unique in the market, Heritage-2 models (38' & 39') are available with 3ft single beds and two en-suite bath/shower rooms.

Model illustrated 38 x 12-2 bedroom with optional integrated microwave.



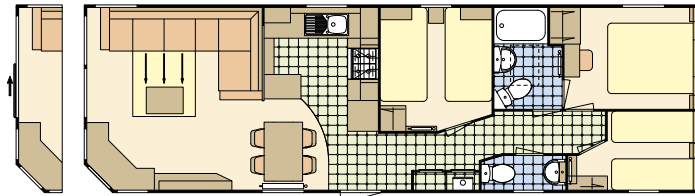
Front Door Option

35 x 12 - 2 bedroom 6 berth



Front Door Option

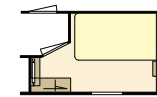
38 x 12 - 2 bedroom 6 berth



Front Door Option

39 x 12 - 3 bedroom 8 berth

The 39 x 12/3 bedroom is also available with a unique optional feature of a 3' single bed in the third bedroom.



High specification as standard

The entire Atlas range includes many domestic style features you may not expect to find in a holiday home as standard.

We also offer an exciting range of options, unique to each model, allowing you to make your holiday home truly individual.

Selected options

- Layout options on 35/12/2 and 38/12/3
- Central heating with TRV's and condensing boiler
- Electric plinth heaters and heated towel rails
- Trace heating
- Extra Insulation or Ultrawarm insulation package
- PVCu double glazing
- 'Low E' PVCu double glazing
- Sliding patio door inc. two downlighters to front elevation in lieu of windows
- Cladding options
 - Environmental 'green' colours
 - Canexel cladding
 - Rigid PVC cladding
 - Timber cladding (requires routine maintenance)
- Pre-galvanised or fully galvanised chassis
- Integrated microwave (fitted as standard at extra cost)
- One 600mm appliance (dishwasher/washing machine/washer dryer)
- Extra dining chairs
- Provision for up to 32" wall mounted TV in lounge
- TV signal booster
- TV point to master bedroom (may require TV signal booster at extra cost)
- TV point to twin bedroom (may require TV signal booster at extra cost)
- Wall mounted extractor in ensuite (where bath or shower not provided as standard)

Duvets, pillows & bedrunner, TV, DVD player, and all other ornaments are for display only

**OPTIONAL HIGH PERFORMANCE
ULTRAWARM
'SMART CAVITY' INSULATION**

Status-2

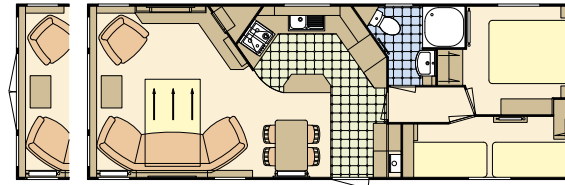
iconic modern design



The Status-2 combines a spacious living area with an array of high specification features. The kitchen with its island drawer unit features a large integrated fridge freezer, oven and grill with freestanding dining table and upholstered designer chairs – all finished in dark walnut. The stunning walnut finish continues into the living room with its contemporary furniture and exquisite soft furnishings. The flame effect glass fronted fire complete with remote control creates an impressive focal feature. The quality continues throughout the two and three bedroom homes with glorious soft furnishings, contemporary fitted furniture, stunning shower room and en suite facilities.

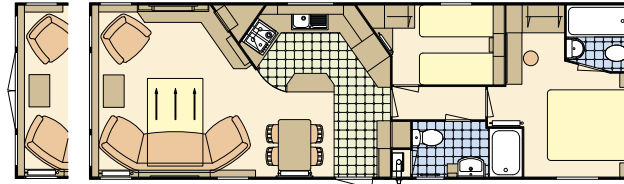
Model illustrated 38 x 12-6 – 2 bedroom with optional Canexel cladding.





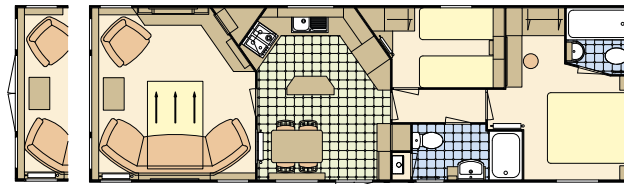
Front Door Option

35 x 12-6 – 2 bedroom 6 berth



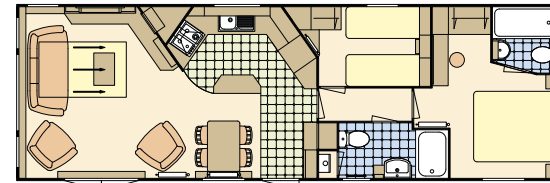
Front Door Option

38 x 12-6 – 2 bedroom 6 berth



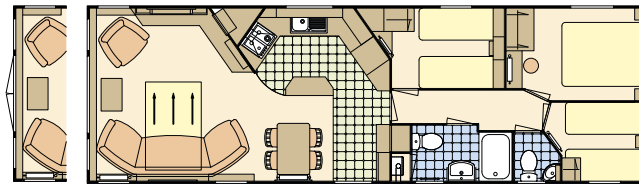
Front Door Option

38 x 12-6 – 2 bedroom 6 berth – Secluded Lounge



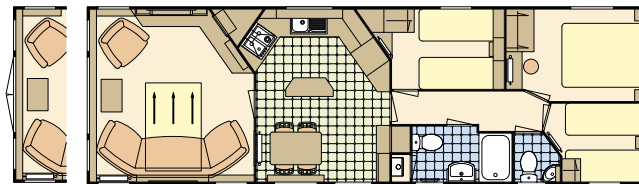
Side Door Option

38 x 12-6 – 2 bedroom 6 berth



Front Door Option

39 x 12-6 – 3 bedroom 8 berth



Front Door Option

39 x 12-6 – 3 bedroom 8 berth – Secluded Lounge

High specification as standard

The entire Atlas range includes many domestic style features you may not expect to find in a holiday home as standard.

We also offer an exciting range of options, unique to each model, allowing you to make your holiday home truly individual.

Selected options

- Pre-galvanised or fully galvanised chassis
- Cladding options
 - Environmental 'green' colours
 - Canexel cladding
 - Rigid PVC cladding
 - Timber cladding (requires routine maintenance)
- Extra or Ultrawarm insulation package
- PVCu double glazing
- 'Low E' double glazing
- D/Glazed front French doors inc. 2 x down lighters
- Trace heating
- C/heating with TRV's and condensing boiler
- Electric plinth heaters and heated towel rails
- Extra dining chairs
- Provision for up to 32" wall mounted TV in lounge
- Integrated microwave
- Option for one 600 integrated appliance (dishwasher/washer/washer-dryer)
- TV point to twin bedroom (may require TV signal booster at extra cost)
- TV signal booster
- Duvet covers and pillow case sets
- Bed runner & bolster set to main bedroom
- Wall mounted extractor in ensuite (where bath or shower not provided as standard)
- Shower cubicle in lieu of bath
- Shower over bath (where bath is fitted) with screen and wetwalling
- Towel radiator as part of central heating package

TV, DVD player, and all other ornaments are for display only.

**OPTIONAL HIGH PERFORMANCE
ULTRAWARM
'SMART CAVITY' INSULATION**

Image-2

space and luxury

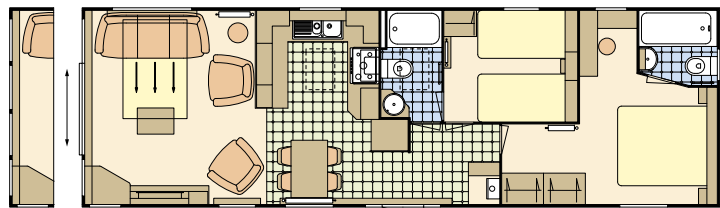


The Image-2 has a spacious, open plan living area with a free standing three piece suite. Sliding patio doors and contemporary furniture design make the Image-2 an elegant modern home in which to spend your free time.

The stylish kitchen has an integrated fridge freezer and built-in microwave, soft close cupboard doors and 600mm wide oven/grill.

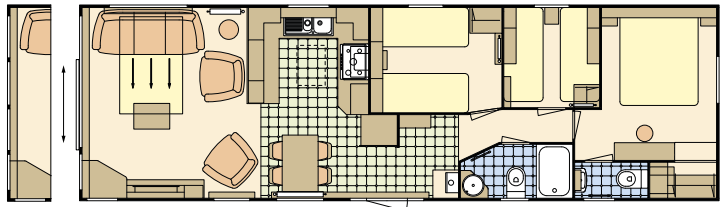
There is quality throughout this home from its warm colours and sumptuous soft furnishings with large wardrobes, dressing table and en suite bathroom in the main bedroom. The second 'guest' bedroom enjoys large 3' beds and access to the main shower room via an en suite door.

Model illustrated 40 x 12-6 - 2 bedroom.



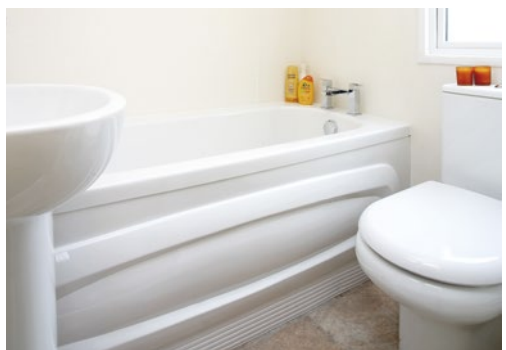
Front Window Option

40 x 12-6 - 2 bedroom 6 berth



Front Window Option

40 x 12-6 - 3 bedroom 8 berth



High specification as standard

The entire Atlas range includes many domestic style features you may not expect to find in a holiday home as standard.

We also offer an exciting range of options, unique to each model, allowing you to make your holiday home truly individual.

Selected options

- Provision for wall mounted TV in lounge
- Option for one 600 integrated appliance (dishwasher/washer/washer-dryer)
- Extra dining chairs
- Shower over bath (where bath is fitted) with screen and wetwalling
- 'Low E' double glazing
- Ultrawarm insulation
- Double glazed PVCu windows in lieu of front doors
- Environmental colours
- Canaxel cladding
- Rigid PVC cladding
- Timber cladding
- Trace heating
- Pre-galvanised or fully galvanised chassis

TV, DVD player, and all other ornaments are for display only.

**OPTIONAL HIGH PERFORMANCE
ULTRAWARM
'SMART CAVITY' INSULATION**

Concept Lodge-3

contemporary studio style



The Concept Lodge-3 sets the standard for the contemporary leisure home with its combination of fashionable highly specified living area and striking exterior features.

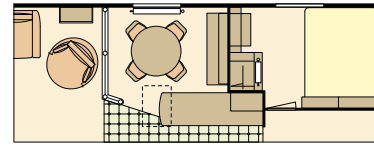
On entering the Concept Lodge-3, you are immediately impressed by the high vaulted ceilings giving an unrivalled feeling of space. The contemporary layout of the lounge area leads you into the stunning highly specified kitchen, designed for luxury living.

The Concept Lodge-3 gives you all the benefits and convenience of luxury urban, loft-style living in a country leisure home retreat.

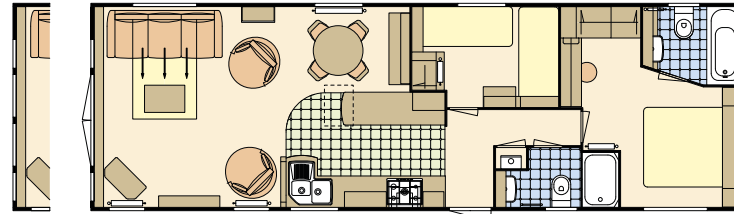




OPTIONAL RAISED DINETTE AREA WITH GLASS PANNELLED BALUSTRADE

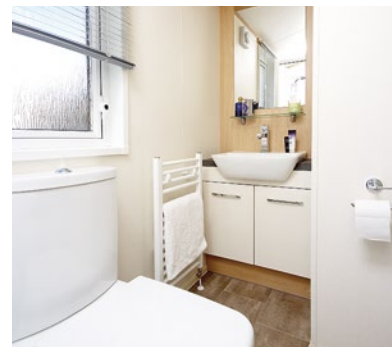


FREESTANDING SINGLE BEDS AND FURNITURE ALLOW FOR VARIOUS SLEEPING CONFIGURATIONS



Front Window Option

41 x 13 - 2 bedroom 6 berth



High specification as standard

The entire Atlas range includes many domestic style features you may not expect to find in a holiday home as standard.

We also offer an exciting range of options, unique to each model, allowing you to make your holiday home truly individual.

Selected options

- Provision for wall mounted TV in lounge
- Fold out occasional bed to lounge suite
- Raised dinette area with glass pannelled balustrade
- Extra dining chairs
- Integrated dishwasher
- Integrated slimline dishwasher
- Integrated washer or washer dryer
- 300mm Wine Cooler
- TV point to twin bedroom
- TV signal booster
- Shower cubicle in lieu of bath
- Shower over bath (where bath is fitted) with screen and wetwalling
- 'Low E' double glazing
- 'Low E' Argon filled double glazing
- Ultrawarm insulation or Ultrawarm Plus insulation
- Environmental colours
- Canaxel cladding
- Timber cladding
- Trace heating
- Fully galvanised chassis

TV, DVD player, and all other ornaments are for display only.

**OPTIONAL HIGH PERFORMANCE
ULTRAWARM
PLUS
'SMART CAVITY' INSULATION**

Jasmine Lodge-6

ultimate luxury and style

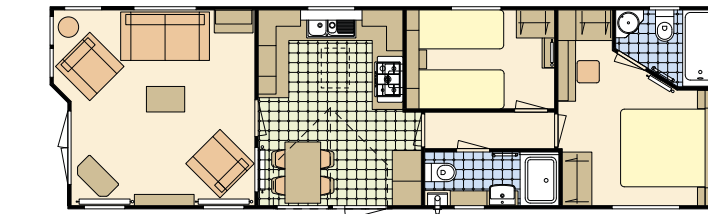


The Jasmine Lodge-6 is the epitome of sophistication with stylish, modern furnishings throughout. The spacious lounge features ceiling height windows, a luxurious, contemporary suite, a log-effect electric fire and double glazed front French doors. There is an additional TV point above the fire which incorporates a pre-wired connection for a DVD (not included).

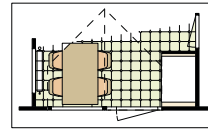
The modern fully featured kitchen includes an integrated oven, separate 5 ring hob with wok burner, a microwave oven, dishwasher and American-style fridge freezer. There is also space for an optional washer/dryer.

The Jasmine Lodge-6 is the perfect place to sit back, relax and enjoy life to the full.

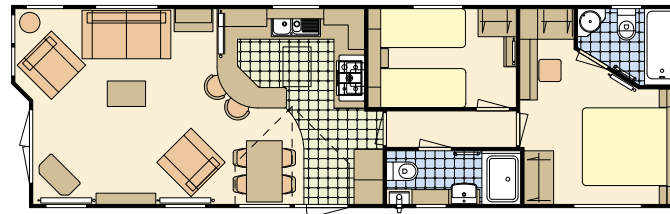
Model illustrated 43 x 13 - 2 bedroom open plan with optional sound system.



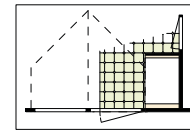
43 x 13 – 2 bedroom 4 berth



American Style Freezer Option



43 x 13 – 2 bedroom 4 berth OP



American Style Freezer Option



High specification as standard

The entire Atlas range includes many domestic style features you may not expect to find in a holiday home as standard.

We also offer an exciting range of options, unique to each model, allowing you to make your holiday home truly individual.

Selected options

- Cladding options
 - Environmental 'green' colours
 - Canaxel cladding
 - Timber cladding (requires routine maintenance)
- 'Low E' double glazing
- Ultrawarm Plus insulation with 'Low E', Argon filled double glazing
- Trace heating
- Fold out sprung bed to lounge sofa
- Built in sound system in lounge – including four roof mounted lounge speakers
- Extra dining chairs
- 'American' style fridge freezer
- Integrated washer / washer-dryer (changes standard 600 dishwasher under microwave to a 450 slimline dishwasher under the drainer – the 1.5 bowl sink changes to 1 bowl)
- TV point to twin bedroom
- Full BS3632 Residential specification

TV, DVD player, and all other ornaments are for display only.

**OPTIONAL HIGH PERFORMANCE
ULTRAWARM
PLUS
'SMART CAVITY' INSULATION**

Lilac Lodge-5

Appreciate the difference



The Lilac Lodge-5 is the ultimate in affordable luxury holiday accommodation.

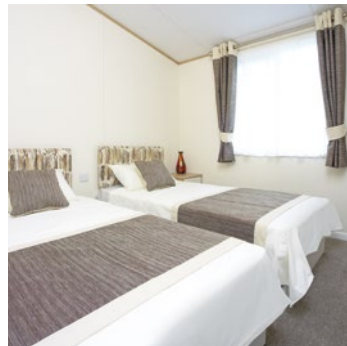
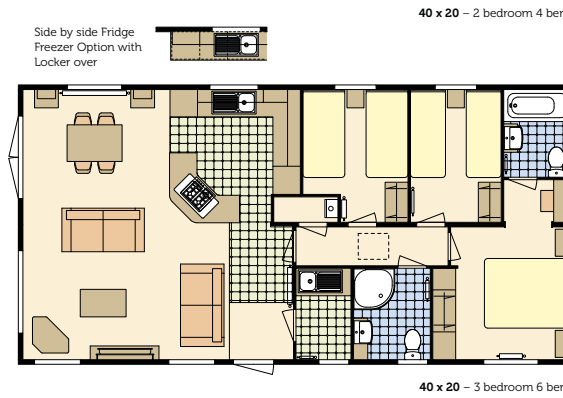
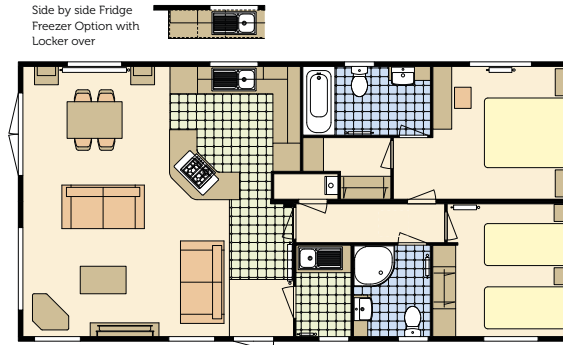
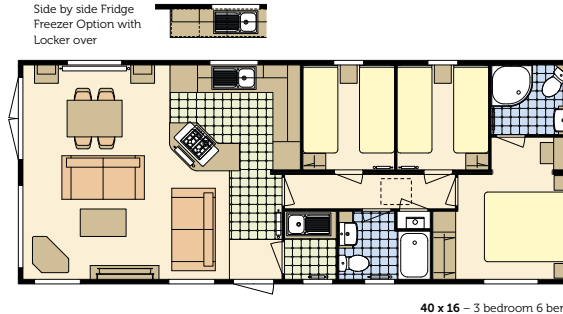
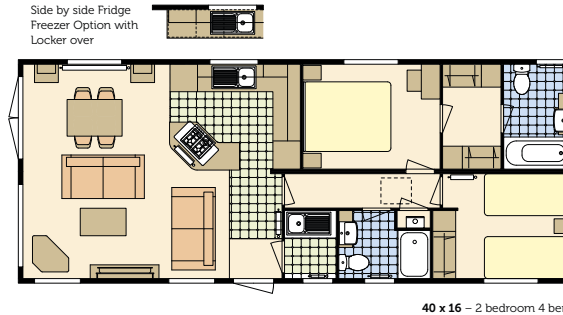
The stunning, open-plan living space has two free standing sofas, glass-fronted flame effect fire, French doors and position for optional wall mounted flat screen TV.

As standard, the fabulous kitchen offers a large integrated fridge-freezer, built-in oven and hob. The optional luxury pack adds an integrated dishwasher, washing machine and microwave oven.

The main bedroom features a walk-through wardrobe (2 bedroom layouts only) and large en suite bathroom with shower screen and shower over the bath. The Lilac Lodge-5 is completed with a well appointed twin bedroom and separate shower room.

Model illustrated 40 x 12 – 2 bedroom with optional Luxury Pack and Canexel exterior cladding.





High specification as standard

The entire Atlas range includes many domestic style features you may not expect to find in a holiday home as standard.

We also offer an exciting range of options, unique to each model, allowing you to make your holiday home truly individual.

Selected options

- Cladding options
 - Environmental 'green' colours
 - Canexel cladding
 - Rigid PVC cladding
 - Timber cladding (requires routine maintenance)
- Ultrawarm insulation package
- Ultrawarm Plus insulation with 'Low E', Argon filled double glazing
- 'Low E' double glazing
- 'Low E' Argon filled double glazing
- Trace heating
- Fold out sprung bed to lounge sofa
- Integrated washer dryer
- Extra dining chairs
- Three seater settee and armchair
- Provision for up to 32" wall mounted TV in lounge
- Side-by-side undercounter fridge and freezer in lieu of full height fridge freezer
- 300mm wine cooler
- Shower over bath (where bath is fitted) with screen and wetwalling
- Full BS3632 Residential specification
- Toilet in utility room (includes wall mounted extractor fan) 20' models

Luxury Pack consisting of:

- Coffee table
- Integrated stainless steel microwave
- Integrated dishwasher
- Integrated washing machine
- Voiles to bedrooms
- Duvet covers, pillowcases, and bed runners to all bedrooms

TV, DVD player, and all other ornaments are for display only.

**OPTIONAL HIGH PERFORMANCE
ULTRAWARM
PLUS
'SMART CAVITY' INSULATION**

Key ● Standard □ Optional × Not Available – Not applicable

	MOONSTONE-2	FLORIDA-3	FLORIDA-3 EXCEL	EVERGLADE-3	EVERGLADE-3 EXCEL	CHORUS-6	RUBY-3	DEBONAIR-2	HERITAGE-2	STATUS-2	IMAGE-2	CONCEPT LODGE-3	JASMINE LODGE-6	LILAC LODGE-5
Exterior														
Tongue and grooved P5 moisture resistant flooring	●	●	●	●	●	●	●	●	●	●	●	●	●	●
Painted chassis	●	●	●	●	●	●	●	●	●	●	×	×	×	×
Pre Galvanised chassis	□	□	□	□	□	□	□	□	□	□	×	×	×	×
Pre Galvanised chassis with twin axle	–	–	–	–	–	–	–	–	–	–	●	●	–	–
Fully galvanised chassis	□	□	□	□	□	□	□	□	□	□	–	–	–	–
Fully galvanised chassis with twin axle	–	–	–	–	–	–	–	–	–	–	□	□	●	●
Woodgrain aluminium cladding	●	●	●	●	●	●	●	●	●	●	●	×	×	×
Environmental Green exterior	□	□	□	□	□	□	□	□	□	□	□	□	□	□
Canexel cladding	□	×	×	×	×	□	□	□	□	□	□	□	□	□
Rigid PVC cladding	□	×	×	×	×	□	□	□	□	□	□	□	●	●
Royal vinyl cladding	×	×	×	×	×	×	×	×	×	×	×	×	×	●
Timber cladding	□	□	□	□	□	□	□	□	□	□	□	□	□	□
Aluminium gutters with coordinated downpipes	●	●	●	●	●	●	●	●	●	×	×	×	×	×
PVC gutters with coordinated downpipes	×	×	×	×	×	×	×	×	×	●	●	●	●	●
PVC soffits and fascias	×	×	×	×	×	×	×	×	×	×	×	●	●	●
Velux roof light with blind	×	×	×	×	×	×	×	×	●	×	●	●	×	×
Plastisol steel pantile pitched roof	●	●	●	●	●	●	●	●	●	●	●	●	●	●
Exterior light(s)	□	□	●	□	●	●	●	●	●	●	●	●	●	●
Insulation														
Underfloor insulation	●	●	●	●	●	●	●	●	●	●	●	●	●	●
Lagged hot and cold water exterior pipework	●	●	●	●	●	●	●	●	●	●	●	●	●	●
Thicker walls and insulation	●	●	●	●	●	●	●	●	●	●	–	–	–	–
Thicker walls and extra insulation	□	□	□	□	□	□	□	□	□	□	●	–	–	–
Thicker walls and Premium insulation	×	×	×	×	×	×	×	×	×	×	×	●	–	●
Ultrawarm insulation	□	□	□	□	□	□	□	□	□	□	□	□	●	□
Ultrawarm Plus insulation	×	×	×	×	×	×	×	×	×	×	×	□	□	□
PVCu Double glazed windows and doors	●	□	□	□	□	□	●	□	□	□	●	●	●	●
'Low E' double glazing	□	□	□	□	□	□	□	□	□	□	□	□	□	□
'Low E' Argon filled double glazing	×	×	×	×	×	×	×	×	×	×	×	□	□	□
Double glazed front French doors inc. 2 downlighters	×	×	×	×	×	●1	□	×	×	□	×	●	●	●10
Double glazed sliding patio doors inc. 2 downlighters	×	×	×	×	×	×	×	□	□	×	●	×	×	×
Trace heating	□	□	□	□	□	□	□	□	□	□	□	□	□	□
Interior														
Vaulted ceilings throughout	●	●	●	●	●	●	●	●	●	●	●	●	●	●
Flush internal doors with satin steel style door handles	●	●	●	●	●	●	●	●	●	●	●	●	●	●
Gas water heater - 11 litre capacity	–	●	●	●	●	–	●	●	●	●	–	–	–	–
Gas combi central heating with thermostatic radiator valves	●13	□	□	□	□	●	□	□	□	□	●	●	●	●
Electric plinth heaters with heated towel rails	□	□	□	□	□	□	□	□	□	□	×	×	×	×
Energy efficient light fittings	●	●	●	●	●	●	●	●	●	●	●	●	●	●
Planked interior ceiling	×	×	×	×	×	×	×	×	×	×	×	×	●	×
Net curtains or voiles	×	●	●	●	●	●	●	●	●	●	●	●	●	□11
Underlay to lounge area	×	×	●	×	●	–	–	–	–	–	–	–	–	–
Underlay to all carpets	×	×	×	×	×	●	●	●	●	●	●	●	●	●
Venetian blinds to kitchen and shower/ensuite/bathroom	●	●	●	●	●	●	●	●	●	●	●	●	●	●
Soft close hinges to doors throughout	×	×	×	×	×	×	×	×	×	●	●	●	●	×
Smoke detector	●	●	●	●	●	●	●	●	●	●	●	●	●	●
Carbon monoxide detector	●	●	●	●	●	●	●	●	●	●	●	●	●	●
Fire extinguisher	●	●	●	●	●	●	●	●	●	●	●	●	●	●
Emergency escape windows	●	●	●	●	●	●	●	●	●	●	●	●	●	●

1. Only with front door option 2. Open plan model only 3. Standard in 38 x 12 model only 4. Models with separate en suite only 5. Not 28 x 12 or 36 x 12 WC models 6. Not 28 x 12 model 7. Not 35 x 12 model 8. 38 x 12 models only 9. Not 40 x 16 3 bed/6 berth

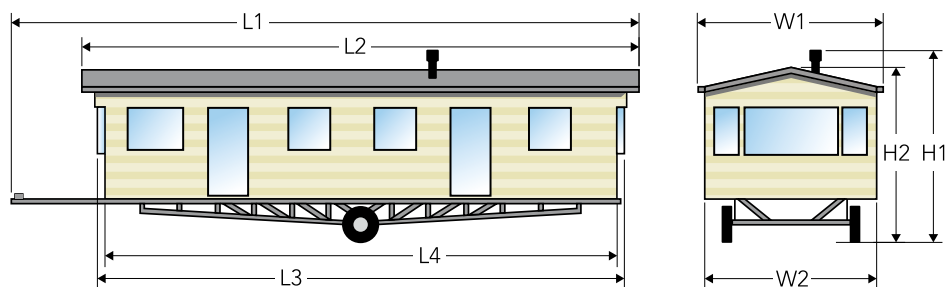
10. Does not include 2 x downlighters 11. Part of the Lilac Lodge Luxury Pack 12. Option on 40 x 12 3 bed 13. TRVs are optional 14. to main bathroom 15. 2 bedroom layout only

* Built with an integrated fridge freezer at extra cost ** Built with an integrated microwave at extra cost

Key ● Standard □ Optional × Not Available – Not applicable

	MOONSTONE-2	FLORIDA-3	FLORIDA-3 EXCEL	EVERGLADE-3	EVERGLADE-3 EXCEL	CHORUS-6	RUBY-3	DEBONAIR-2	HERITAGE-2	STATUS-2	IMAGE-2	CONCEPT LODGE-3	JASMINE LODGE-6	LILAC LODGE-5
Lounge & Dining area														
Free standing suite	×	×	×	×	×	×	×	●	×	●	●	●	●	●
Fold out occasional bed	●	×	●	×	●	●	●	●	●	●	●	□	□	□
Fixed dinette	●	●	●	●	●	×	×	×	×	×	×	×	×	×
Free standing dining table and four chairs	×	×	×	×	×	●	●	●	●	●	●	●	●	●
Scatter cushions to lounge	×	×	×	×	×	□	×	●	●	●	●	●	●	●
Extra dining chairs/stool	□	□	□	□	□	□	□	□	□	□	□	□	□	□
Bar stools	×	×	×	×	×	×	×	×	×	×	×	×	●2	×
Gas fire	×	□	□	□	□	□	□	×	×	×	×	×	×	×
Electric fire	●	●	●	●	●	●	●	●	●	●	●	●	●	●
Coffee table	□	□	□	□	□	□	□3	□	●	●	●	●	●	□11
Vertical blinds	×	×	×	×	×	×	×	×	×	●	●	●	●	×
Provision for up to 32" wall mounted TV (does not include bracket)	×	×	×	×	×	□	□	□	□	□	□	□	●	●
Kitchen														
Electric cooker extractor hood	×	×	●	×	●	●	●	●	●	●	●	●	●	●
Integrated oven and grill with 4 ring hob and electronic ignition	●	●	●	●	●	●	●	●	●	–	–	–	–	–
Gas oven and grill with electronic ignition	×	×	×	×	×	×	×	×	×	●	●	●	●	●
4 burner hob with electronic ignition	×	×	×	×	×	×	×	×	×	●	×	×	×	●
5 burner hob with electronic ignition	×	×	×	×	×	×	×	×	×	×	●	●	●	×
Freestanding undercounter fridge	□	□	□	□	□	–	–	–	–	–	–	–	–	–
Large capacity 'A' rated integrated fridge freezer	□	□	□	□	□	●	●*	●	●	●	●	□	●	●
Side by side fridge and freezer	×	×	×	×	×	×	×	×	×	×	×	●	×	□
Large capacity American style fridge freezer	×	×	×	×	×	×	×	×	×	×	×	×	□	×
Appliance shelf and socket	●	●	●	●	●	●	●	–	–	●	–	–	–	●
Integrated microwave oven	×	×	×	×	×	□	□	●**	●**	□	●	●	●	□11
Integrated dishwasher	×	×	×	×	×	×	□	□	□	□	□	□	●	□11
Integrated slimline dishwasher	×	×	×	×	×	×	–	–	–	–	–	□	□	–
Integrated washing machine ¹¹ or washer dryer	×	×	×	×	×	×	□	□	□	□	□	□	□	□11
300mm wine cooler	×	×	×	×	×	×	×	×	×	×	×	□	●	□
Bedrooms														
Freestanding metal bed frames with interior sprung mattresses	●	●	●	●	●	●	●	●	●	●	●	●	●	×
Gas strut assisted metal lift up storage bed to main bedroom	×	×	●	×	●	□	□	□	□	●	●	●	–	–
Divan beds to main and / or twin bedrooms	×	×	×	×	×	×	×	×	×	×	×	●	●	●●
Metal bunk system – double on the bottom with single above	□	×	×	×	×	×	×	×	×	×	×	×	×	×
Under bed storage	●	●	●	●	●	●	●	●	●	●	●	●	●	●
Twin beds combine to make double	●	●	●	●	●	●	●	●	●	●	●	●	●	●
TV point to master bedroom	×	×	×	×	×	×	×	□	□	●	●	●	●	●
TV point to twin bedroom	×	×	×	×	×	×	×	□	□	□	●	□	□	●
TV signal booster	×	×	×	×	×	×	×	□	□	□	●	□	●	●
Upholstered headboards	×	×	×	×	×	●	●	●	●	●	●	●	●	●
Duvet covers and pillowcase sets	×	×	×	×	×	×	×	×	×	□	●	●	●	□11
Bedrunners and bolsters/bedroom scatter cushions (varies to model)	×	×	×	×	×	×	×	×	×	□	●	●	●	□11
Gazunder ¹¹ space saving bed (twin rooms only)	□	×	●	×	●	□	□	□	□	–	–	–	–	–
Over bed reading lights	×	×	×	×	×	×	×	●	●	●	●	●	●	×
Bathroom/Shower														
Close coupled toilet(s)	●	●	●	●	●	●	●	●	●	●	●	●	●	●
Soft close toilet seat(s)	×	×	×	×	×	×	×	×	×	●	●	●	●	×
Extractor fan to main shower/bathroom	□	●	●	●	●	●	●	●	□	●	●	●	●	●
Extractor fan to ensuite/separate toilet	□	–	–	□4	□4	□4	□6	□	□	□7	●12	●	●	●
Separate toilet/ensuite	●	×	×	●5	●5	●	●6	●	●	●7	●	●	●	●
Bath	×	×	×	×	×	×	●8	×	●8	●8	●15	●	●	●9
Shower cubicle in lieu of bath	×	×	×	×	×	×	□8	×	□8	□8	□15	□	–	□9
Shower over bath with screen and wetwalling	×	×	×	×	×	×	□8	×	□8	□8	□15	□	●	□9
Towel radiator as part of central heating package	×	×	×	×	×	×	×	□	□	●	●	●14	●	□
Thermostatic mixer to shower and/or bath	●	●	●	●	●	●	●	●	●	●	●	●	●	●

External dimensions



Dimensions shown are for standard clad units only, please contact Atlas for dimensions of optional clad units.

MOONSTONE-2 External dimensions for each model in the range

MODELS	L1	L2	L3	L4	W1	W2	H1	H2
35 x 12/2	11.970m 39' 3¼"	11.100m 36' 5"	10.850m 35' 7¼"	10.700m 35' 1¼"	3.860m 12' 8"	3.680m 12' 1"	3.330m 10' 11"	3.330m 10' 11"
36 x 12/2 ES	12.427m 40' 9¼"	11.557m 37' 11"	11.307m 37' 1¼"	11.157m 36' 7¼"	3.860m 12' 8"	3.680m 12' 1"	3.330m 10' 11"	3.330m 10' 11"
36 x 12/3	12.427m 40' 9¼"	11.557m 37' 11"	11.307m 37' 1¼"	11.157m 36' 7¼"	3.860m 12' 8"	3.680m 12' 1"	3.330m 10' 11"	3.330m 10' 11"

FLORIDA-3 External dimensions for each model in the range

MODELS	L1	L2	L3	L4	W1	W2	H1	H2
28 x 10/2	9.910m 32' 6¼"	9.187m 30' 1¾"	8.807m 28' 10¾"	8.557m 28' 1"	3.250m 10' 8"	3.070m 10' ¾"	3.260m 10' 8¼"	3.260m 10' 8¼"
32 x 10/2	10.946m 35' 11"	10.223m 33' 6½"	9.843m 32' 3½"	9.593m 31' 5¾"	3.250m 10' 8"	3.070m 10' ¾"	3.260m 10' 8¼"	3.260m 10' 8¼"
35 x 10/3	12.043m 39' 6¼"	11.320m 37' 1¾"	10.940m 35' 10¾"	10.690m 35' ¾"	3.250m 10' 8"	3.070m 10' ¾"	3.260m 10' 8¼"	3.260m 10' 8¼"

EVERGLADE-3 External dimensions for each model in the range

MODELS	L1	L2	L3	L4	W1	W2	H1	H2
28 x 12/2	9.945m 32' 7½"	9.302m 30' 6¼"	8.892m 29' 2"	8.592m 28' 2¼"	3.860m 12' 8"	3.680m 12' 1"	3.330m 10' 11"	3.330m 10' 11"
32 x 12/2	11.129m 36' 6¼"	10.486m 34' 4¾"	10.076m 33' 1"	9.776m 32' 1"	3.860m 12' 8"	3.680m 12' 1"	3.330m 10' 11"	3.330m 10' 11"
35 x 12/2	12.043m 39' 6¼"	11.400m 37' 4¾"	10.990m 36' 1"	10.690m 35' ¾"	3.860m 12' 8"	3.680m 12' 1"	3.330m 10' 11"	3.330m 10' 11"
36 x 12/3	12.348m 40' 6¼"	11.705m 38' 4¾"	11.295m 37' ¾"	10.995m 36' ¾"	3.860m 12' 8"	3.680m 12' 1"	3.330m 10' 11"	3.330m 10' 11"
36 x 12/2 WC	12.569m 41' 2¾"	11.926m 39' 1½"	11.516m 37' 9½"	11.216m 36' 9½"	3.860m 12' 8"	3.680m 12' 1"	3.330m 10' 11"	3.330m 10' 11"

CHORUS-6 External dimensions for each model in the range

MODELS	L1	L2	L3	L4	W1	W2	H1	H2
36 x 12/2 FD	12.313m 40' 4¾"	11.352m 37' 2¾"	10.889m 35' 8¾"	10.889m 35' 8¾"	3.860m 12' 8"	3.680m 12' 1"	3.390m 11' 1½"	3.390m 11' 1½"
36 x 12/2	12.313m 40' 4¾"	11.352m 37' 2¾"	11.189m 36' 8½"	10.889m 35' 8¾"	3.860m 12' 8"	3.680m 12' 1"	3.390m 11' 1½"	3.390m 11' 1½"
37 x 12/3	12.650m 41' 6"	11.689m 38' 11¼"	11.526m 37' 9¾"	11.226m 36' 10"	3.860m 12' 8"	3.680m 12' 1"	3.390m 11' 1½"	3.390m 11' 1½"
37 x 12/3 FD	12.650m 41' 6"	11.689m 38' 11¼"	11.526m 37' 10"	11.226m 36' 10"	3.860m 12' 8"	3.680m 12' 1"	3.390m 11' 1½"	3.390m 11' 1½"

RUBY-3 External dimensions for each model in the range

MODELS	L1	L2	L3	L4	W1	W2	H1	H2
28 x 12/2	9.972m 32' 8½"	9.148m 30' ¼"	8.809m 28' 10¾"	8.809m 28' 10¾"	3.860m 12' 8"	3.680m 12' 1"	3.390m 11' 1½"	3.390m 11' 1½"
32 x 12/2	11.113m 36' 5½"	10.289m 33' 9"	9.950m 32' 7¾"	9.950m 32' 7¾"	3.860m 12' 8"	3.680m 12' 1"	3.390m 11' 1½"	3.390m 11' 1½"
35 x 12/2	12.026m 39' 5½"	11.202m 36' 9"	10.863m 35' 7¾"	10.863m 35' 7¾"	3.860m 12' 8"	3.680m 12' 1"	3.390m 11' 1½"	3.390m 11' 1½"
37 x 12/3	12.465m 40' 10¾"	11.641m 38' 2¼"	11.303m 37' 1"	11.303m 37' 1"	3.860m 12' 8"	3.680m 12' 1"	3.390m 11' 1½"	3.390m 11' 1½"
38 x 12/2	12.769m 41' 10¾"	11.945m 39' 2¼"	11.607m 38' 1"	11.607m 38' 1"	3.860m 12' 8"	3.680m 12' 1"	3.390m 11' 1½"	3.390m 11' 1½"

DEBONAIR-2 External dimensions for each model in the range

MODELS	L1	L2	L3	L4	W1	W2	H1	H2
36 x 12/2	12.392m 40' 7¾"	11.575m 37' 11¾"	11.447m 37' 6¾"	11.147m 36' 6¾"	3.860m 12' 8"	3.680m 12' 1"	3.390m 11' 1½"	3.390m 11' 1½"
38 x 12/3	13.092m 42' 11½"	12.275m 40' 3¼"	12.147m 39' 10¼"	11.847m 38' 10½"	3.860m 12' 8"	3.680m 12' 1"	3.390m 11' 1½"	3.390m 11' 1½"
38 x 12/3	13.092m 42' 11½"	12.275m 40' 3¼"	12.147m 39' 10¼"	11.847m 38' 10½"	3.860m 12' 8"	3.680m 12' 1"	3.390m 11' 1½"	3.390m 11' 1½"

HERITAGE-2 External dimensions for each model in the range

MODELS	L1	L2	L3	L4	W1	W2	H1	H2
35 x 12/2	11.972m 39' 3/4"	11.342m 37' 2 1/2"	10.922m 35' 10"	10.922m 35' 10"	3.860m 12' 8"	3.680m 12' 1"	3.470m 11' 4 3/4"	3.470m 11' 4 3/4"
38 x 12/2	12.729m 41' 9 3/4"	12.099m 39' 8 1/4"	11.679m 38' 3 3/4"	11.679m 38' 3 3/4"	3.860m 12' 8"	3.680m 12' 1"	3.470m 11' 4 3/4"	3.470m 11' 4 3/4"
39 x 12/3	13.261m 43' 6 1/4"	12.631m 41' 5 1/4"	12.181m 39' 11 3/4"	12.181m 39' 11 3/4"	3.860m 12' 8"	3.680m 12' 1"	3.470m 11' 4 3/4"	3.470m 11' 4 3/4"

STATUS-2 External dimensions for each model in the range

MODELS	L1	L2	L3	L4	W1	W2	H1	H2
35 x 12-6/2	11.745m 38' 6 1/2"	11.085m 36' 4 1/2"	10.695m 35' 1"	10.695m 35' 1"	4.113m 13' 6"	3.835m 12' 7"	3.430m 11' 3"	3.430m 11' 3"
38 x 12-6/2	12.913m 42' 4 1/2"	12.253m 40' 2 1/2"	11.863m 38' 11"	11.863m 38' 11"	4.113m 13' 6"	3.835m 12' 7"	3.430m 11' 3"	3.430m 11' 3"
39 x 12-6/3	13.217m 43' 4 3/4"	12.557m 41' 2 1/4"	12.167m 39' 11"	12.167m 39' 11"	4.113m 13' 6"	3.835m 12' 7"	3.430m 11' 3"	3.430m 11' 3"

IMAGE-2 External dimensions for each model in the range

MODEL	L1	L2	L3	L4	W1	W2	H1	H2
40 x 12-6/2	13.295m 43' 7 1/2"	12.592m 41' 3 3/4"	12.217m 40' 1"	12.217m 40' 1"	4.113m 13' 6"	3.835m 12' 7"	3.430m 11' 3"	3.430m 11' 3"
40 x 12-6/3	13.549m 44' 5 1/2"	12.846m 42' 1 3/4"	12.471m 40' 11"	12.471m 40' 11"	4.113m 13' 6"	3.835m 12' 7"	3.430m 11' 3"	3.430m 11' 3"

CONCEPT LODGE-3 External dimensions for each model in the range

MODEL	L1	L2	L3	L4	W1	W2	H1	H2
41 x 13/2	13.700m 44' 11 1/4"	13.000m 42' 7 3/4"	12.600m 41' 4"	12.600m 41' 4"	4.212m 13' 10"	4.040m 13' 3"	3.710m 12' 2"	3.710m 12' 2"

JASMINE LODGE-6 External dimensions for each model in the range

MODELS	L1	L2	L3	L4	W1	W2	H1	H2
43 x 13/2	14.082m 46' 2 1/2"	13.660m 44' 9 3/4"	13.220m 43' 4 1/2"	12.872m 42' 2 3/4"	4.212m 13' 10"	4.040m 13' 3"	3.792m 12' 5 1/4"	3.792m 12' 5 1/4"
43 x 13/2 OP	14.082m 46' 2 1/2"	13.660m 44' 9 3/4"	13.220m 43' 4 1/2"	12.872m 42' 2 3/4"	4.212m 13' 10"	4.040m 13' 3"	3.792m 12' 5 1/4"	3.792m 12' 5 1/4"

LILAC LODGE-5 External dimensions for each model in the range

MODELS	L1	L2	L3	L4	W1	W2	H1	H2
40 x 16/2	13.274m 43' 6 1/2"	13.061m 42' 10 1/4"	12.252m 40' 2 1/4"	12.252m 40' 2 1/4"	5.464m 17' 11"	4.952m 16' 3"	3.650m 11' 11 3/4"	3.650m 11' 11 3/4"
40 x 16/3	13.274m 43' 6 1/2"	13.061m 42' 10 1/4"	12.252m 40' 2 1/4"	12.252m 40' 2 1/4"	5.464m 17' 11"	4.952m 16' 3"	3.650m 11' 11 3/4"	3.650m 11' 11 3/4"
40 x 20/2	13.274m 43' 6 1/2"	13.061m 42' 10 1/4"	12.252m 40' 2 1/4"	12.252m 40' 2 1/4"	6.684m 21' 11 1/4"	6.172m 20' 3"	3.750m 12' 3 3/4"	3.750m 12' 3 3/4"
40 x 20/3	13.274m 43' 6 1/2"	13.061m 42' 10 1/4"	12.252m 40' 2 1/4"	12.252m 40' 2 1/4"	6.684m 21' 11 1/4"	6.172m 20' 3"	3.750m 12' 3 3/4"	3.750m 12' 3 3/4"

A SUMMARY OF BED SIZES ACROSS THE RANGE

	2'-0" x 6'-0" Single	2'-3" x 6'-0" Single	2'-6" x 6'-0" Single	3'-0" x 6'-0" Large Single	2'-3" x 6'-3" Long Single	2'-6" x 6'-3" Long Single	3'-0" x 6'-3" Large Single	4'-3" x 6'-3" Double	4'-6" x 6'-3" Large Double	5'-0" x 6'-3" Kingsize
Moonstone-2										
35 x 12/2			●						●	
36 x 12/2 ES			●						●	
36 x 12/3		●●							●	
Florida-3 & Florida Excel-3										
28 x 10/2	●							●		
32 x 10/2		●							●	
35 x 10/3	●●							●		
28 x 10/2 Excel-3	●							●		
32 x 10/2 Excel-3		●							●	
35 x 10/3 Excel-3	●●							●		
Everglade-3 & Everglade Excel-3										
28 x 12/2	●								●	
32 x 12/2		●							●	
35 x 12/2		●							●	
36 x 12/3	●●								●	
28 x 12/2 Excel-3	●								●	
32 x 12/2 Excel-3		●							●	
35 x 12/2 Excel-3		●							●	
36 x 12/3 Excel-3	●●								●	
36 x 12/2 WC (Type A)				●					●	
36 x 12/2 WC (Type B)		●					●			
Chorus-6										
36 x 12/2		●							●	
37 x 12/3	●●								●	
36 x 12/2 FD		●							●	
37 x 12/3 FD	●●								●	
Ruby-3										
28 x 12/2		●							●	
32 x 12/2		●							●	
35 x 12/2		●							●	
37 x 12/3	●●								●	
38 x 12/2		●							●	

	2'-0" x 6'-0" Single	2'-3" x 6'-0" Single	2'-6" x 6'-0" Single	3'-0" x 6'-0" Large Single	2'-3" x 6'-3" Long Single	2'-6" x 6'-3" Long Single	3'-0" x 6'-3" Large Single	4'-3" x 6'-3" Double	4'-6" x 6'-3" Large Double	5'-0" x 6'-3" Kingsize
Debonair-2										
36 x 12/2		●								●
38 x 12/2		●								●
38 x 12/3	●●								●	
Heritage-2										
35 x 12/2			●							●
38 x 12/2				●						●
39 x 12/3 (8 Berth)	●			●					●	
39 x 12/3 (7 Berth)			●●						●	
Status-2										
35 x 12-6/2			●							●
38 x 12-6/2			●							●
38 x 12-6/2 SFD			●							●
38 x 12-6/2 Secluded Lounge			●							●
39 x 12-6/3	●●								●	
39 x 12-6/3 Secluded Lounge	●●								●	
Image-2										
40 x 12-6/2								●		●
40 x 12-6/3		●●								●
Concept Lodge-3										
41 x 13/2							●			●
41 x 13/2 Option									●●	
Jasmine Lodge-6										
43 x 13/2							●			●
43 x 13/2 OP							●			●
Lilac Lodge-5										
40 x 16/2								●		●
40 x 16/3								●●		●
40 x 20/2								●		●
40 x 20/3								●●		●

Atlas reserves the right to change any materials, fittings, etc., shown in this brochure at any time and without prior notice as supply or product development demand. All Atlas Leisure Homes are built to comply with all relevant British Standards and Codes of Practice as required by the National Caravan Council certification scheme.

NOTE: Caravan Holiday Homes are not designed for residential occupancy. To use an Atlas Leisure Home, it will need to be correctly sited, have steps or other means of entry and be connected to services (an appropriate propane gas supply, mains electricity to suit the required power offtake, mains water at a pressure to suit the appliances and a waste water/sewage outlet). Due to the nature of our construction methods and practices, it

may not always be possible to match patterns precisely on some wallboards and fabrics. Any Park Operator, anywhere in the UK, can purchase an Atlas Leisure Home for you through the Atlas Dealer/Park Distribution Network. Due to the limitation of the print process we recommend that you see the actual products for colours. Photographs of Atlas Leisure Homes on location are for example only and may not have been sited at that location. Decking, patios, fences, barbecues, etc. have been used for illustrative purposes only. E&OE.

If you invest in an ATLAS Leisure Home, you can be confident that not only do you own the best in design, innovation and value for money but have also made a contribution to environmental sustainability.

Your ATLAS Stockist

ATLAS

ATLAS LEISURE HOMES LIMITED

Wiltshire Road,
Hull HU4 6PD

Tel: 01482 562101 Fax: 01482 566033

atlasleisurehomes.co.uk

