



21

Knightsbridge

4 2 X 1 4 - 2 & 3 B E D R O O M

ALSO AVAILABLE TO RESIDENTIAL SPECIFICATION



Pemberton's flagship single unit has taken on an air of stately elegance with wood effect panelling to the living and sleeping areas. Comfort and practicality are still key considerations in the design of this leisure home and doors separating the lounge from the kitchen come as standard. New lounge furniture is classic in design and you have the option to include a striking accent chair for increased seating. The classic fireplace is in keeping with the style and grace of this room.

With a bright and spacious kitchen and dining area the fine detail, from the high specification handles, ornate pendant lighting and an easy-clean tile effect, merely adds to the allure of the Knightsbridge. Kitchen appliances come as standard including a fridge freezer, microwave, dishwasher and washer dryer. There is also an option for a wine cooler.

[www.pembertonlh.co.uk](http://www.pembertonlh.co.uk)

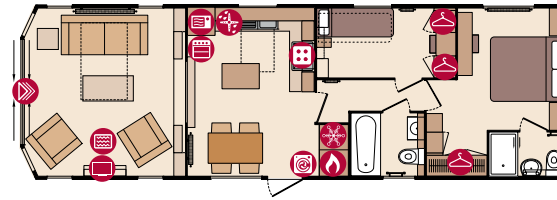
Knightsbridge

the first choice  
for your new home

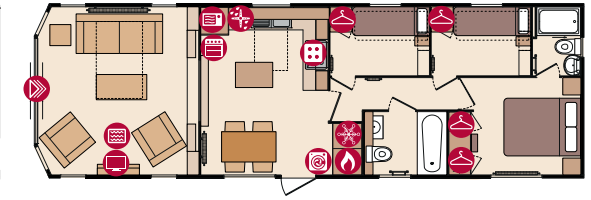




42 x 14 - 2 Bedroom






42 x 14 - 3 Bedroom



### STANDARD FEATURE HIGHLIGHTS

### ALSO AVAILABLE TO RESIDENTIAL SPECIFICATION



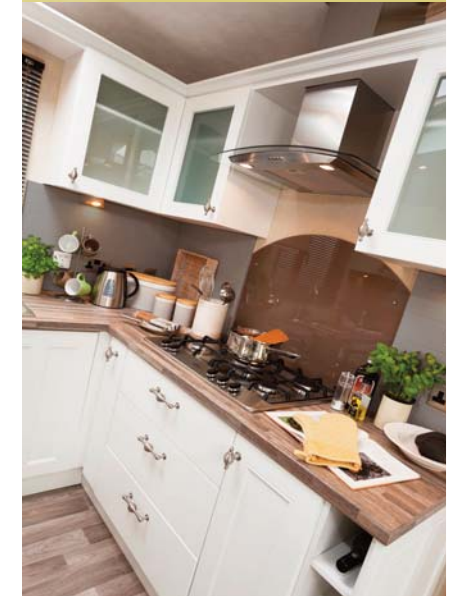
-  TV Space
-  Microwave
-  Wardrobe
-  Electric Fire
-  Washer/Dryer
-  Patio Doors
-  Cooker
-  Dishwasher
-  Boiler
-  Hob
-  Fridge-Freezer

- PVC-U double glazing with four panel patio door to front elevation
- Dormer window above side door entrance and a skylight above the kitchen
- Gas combi central heating system with thermostatic radiator valves
- Fibreglass insulation: 150mm - roof; 60mm - walls and underfloor
- Vaulted ceilings throughout with a minimum ceiling height of 2.2m (7ft 4")
- Realistic state of the art flame effect fire with remote control
- TV bracket and ariel socket in lounge
- 5-burner hob with externally vented extractor hood
- Integrated cooker with separate oven and grill
- Integrated fridge/freezer, dishwasher and microwave
- Washer/dryer (not available on models with electric central heating)
- Large Recycle bin in kitchen cupboard
- TV aerial and socket in kitchen
- Luxurious lounge suite (incorporating sofabed) with ottoman
- Multi-outlet TV aerial booster
- Low energy lighting
- Duvet covers, pillowcases, cushions and throws
- Pitched roof clad in pan tile effect plastisol coated galvanised steel
- Fire extinguisher, smoke detector and carbon monoxide detector
- External electric socket
- Twin axle pre-galvanised steel chassis with detachable tow bar
- 5ft wide divan bed in master bedroom (2 bed models)
- Walk-in wardrobe in master bedroom (2 bed models)
- Bath in bathroom

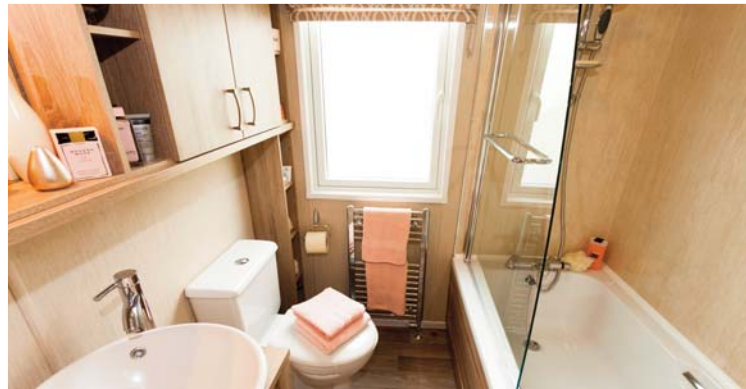
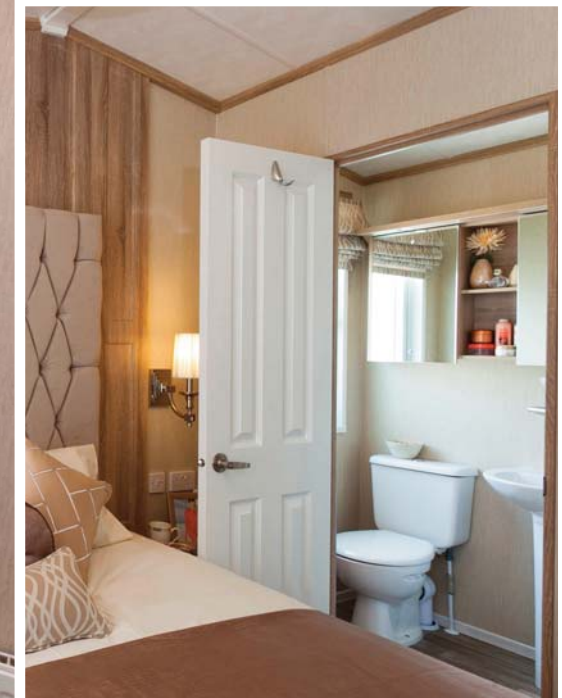
For further details see Feature Checklist on pages 69-70

#### OPTIONS AVAILABLE TO ORDER:

- Leather lounge suite (without sofabed)
- Occasional accent chair
- Alternative electric heating in place of gas combi central heating system
- Windows in place of front patio door - not available in Residential Specification
- Knightsbridge Lodge available in timber, vinyl and Canexel cladding
- Baths Changed to showers
- Striped Footstool
- Residential Specification to BS3632 available in all cladding types
- Stowaway occasional bed available as an optional accessory
- Alternative size single beds available (for example 2ft 6", 3ft and 3ft 6")







The master bedroom is a masterpiece with rich, tactile fabrics combined with divine lighting, exclusive finials and plush tiebacks. Beyond doubt, a luxurious sanctuary. This style and sophistication is echoed in the twin room.

The main bathroom has a high quality finish with aquaboard to the walls around the bath and a glass screen to keep water at bay and the ensuite has a shower with a striking tile affect.

The Knightsbridge will give you a real taste of refinement and will give you and your friends and family the perfect home.